



KAPITAŁ LUDZKI
NARODOWA STRATEGIA SPÓJNOŚCI



OŚRODEK
ROZWOJU
EDUKACJI

UNIA EUROPEJSKA
EUROPEJSKI
FUNDUSZ SPOŁECZNY



Projekt współfinansowany ze środków Unii Europejskiej w ramach Europejskiego Funduszu Społecznego

Ogólnopolska Olimpiada Języka Angielskiego dla Gimnazjalistów

Etap II

Testy z platformy listening

LISTENING

Usłyszysz dwukrotnie pięć krótkich tekstów. Na podstawie informacji zawartych

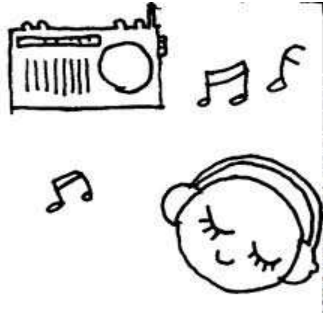
w nagraniu w pytaniach 1–5 z podanych odpowiedzi wybierz właściwą. Zakreśl literę A,

B lub C.

SET 1

The speaker's favorite weekday pastime is [A]

A.



B.



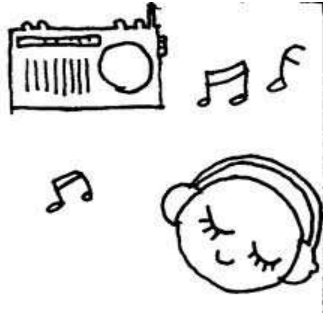
C.



SET 2

What people do less nowadays is [C]

A.



B.



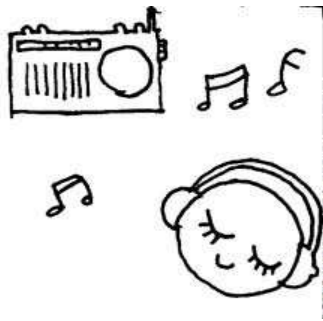
C.



SET 3

What the speaker used to do often was [B]

A.



B.



C.



SET 4

The speaker's favorite holiday is[A]

A.



B.



C.



SET 5

The speaker DOES NOT talk negatively about [B]

A.



B.



C.



SET 6

American kids' favorite holiday seems to be [C]

A.



B.



C.



SET 7

What you DO NOT need for this cocktail is [A]

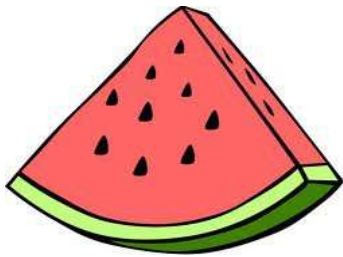
A.



B.



C.



SET 8

The speaker's least favorite fruit is [C]

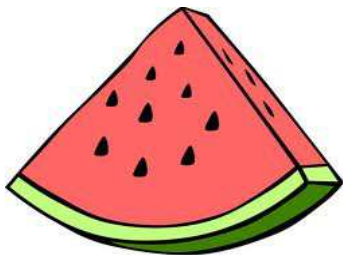
A.



B.



C.



SET 9

The speaker talks about [B]

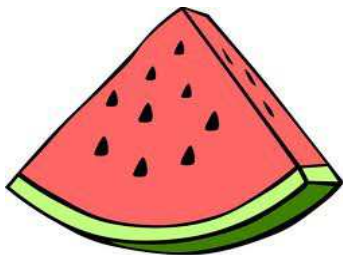
A.



B.



C.



SET 10

They celebrated their birthday at [B]

A.



B.



C.



SET 11

The city's newest attraction is [A]

A.



B.



C.



SET 12

The speaker has never been to [C]

A.



B.



C.



SET 13

The speakers will have ... for lunch. [A]

A.



B.



C.



SET 14

The speaker gives a recipe for [B]

A.



B.



C.



SET 15

The speaker's favorite dish is [C]

A.



B.



C.



SET 16

The speaker talks to [A]

A.



B.

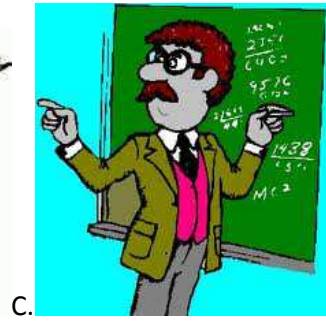
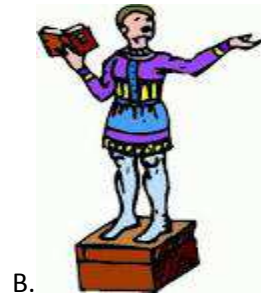
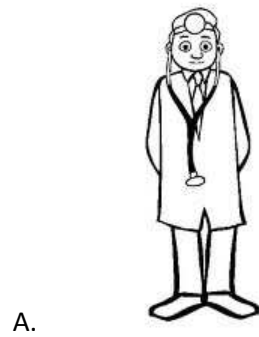


C.



SET 17

The speaker cannot imagine being [C]



SET 18

The speaker wanted to become a [B]

A.



B.

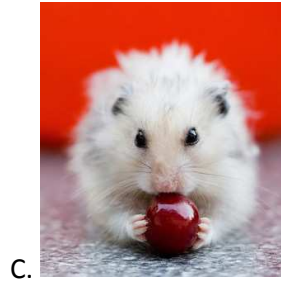


C.



SET 19

The speaker's pet is [A]



SET 20

The speaker's neighbor has recently bought a [B]

A.



B.



C.

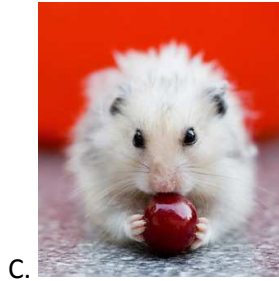


D.



SET 21

The speaker's childhood pet was [D]



SET 22

The scariest place he's ever been to was [C]



SET 23

Their dream destination is [B]

A.



B.



C.



SET 24

The speaker has never been to [A]



SET 25

Which girl did they adopt? [B]

A.



B.



C.



SET 26

The speaker's sister is [A]

A.



B.



C.



SET 27

Which girl is the speaker talking about? [C]

A.



B.



C.



SET 28

According to the speaker, the most boring sport is [C]

A.



B.



C.



SET 29

The speaker explains how to play [A]

A.



B.



C.



SET 30

They talk about [B]

A.



B.



C.

